

Valentine Treat Holder

Peggy Noe

858.722.1402

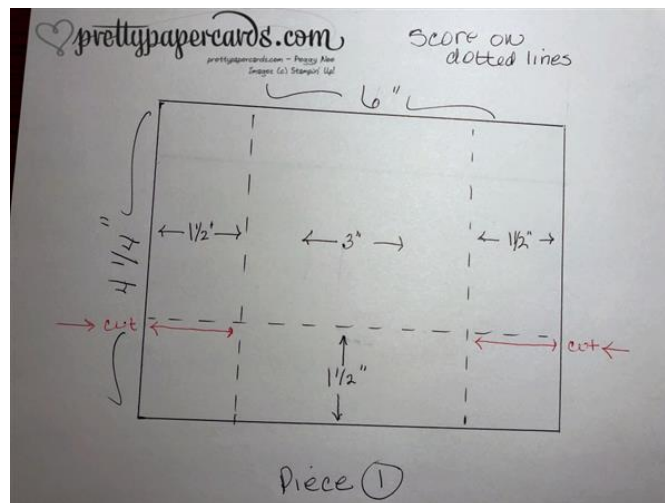
peggy@prettypapercards.com

<http://prettypapercards.com>



CREATE THE TREAT HOLDER

- Begin by cutting two (2) pieces of Lovely Lipstick card stock 6" x 4-1/4"
- Using the Stampin' Up! Simply Scored Scoring Tool, score each piece as follows: set the card stock on the scoring tool in the landscape position. Score at 1-1/2" in from three of the four edges. See the pictures below.



Score and cut one piece as shown above

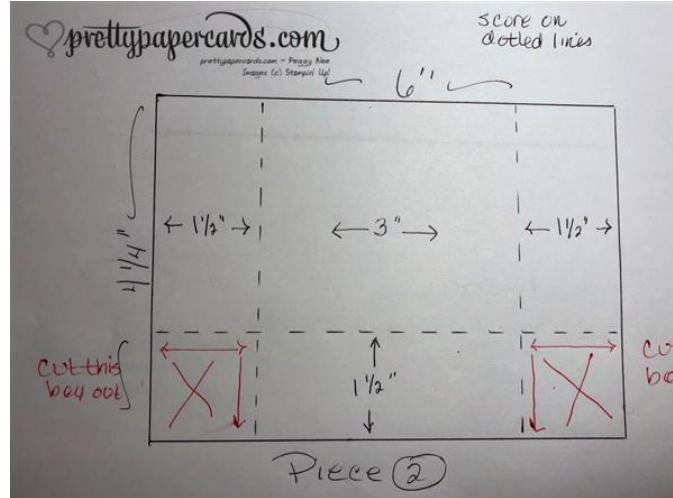
Valentine Treat Holder

Peggy Noe

858.722.1402

peggy@prettypapercards.com

<http://prettypapercards.com>



Score and cut the other piece as shown in the second photo above

- After scoring both pieces of card stock, fold and burnish all score lines with a bond folder.
- Holding one piece in front of you in a landscape position with the lengthwise score line at the bottom, cut in from the left and right sides 1-1/2" along the score line as shown by the red lines on the first diagram above
- Hold the second piece in the same manner, and cut the lower left and the lower right squares off completely by cutting up 1-1/2" from the bottom and in 1-1/2" from each edge. Discard the squares.
- Run both pieces of card stock through the Big Shot using the Lace Dynamic Textured Impressions Embossing Folder.
- Starting with piece number one. fold up each lower flap and attach each to the side with adhesive
- Take piece number two and wrap it over piece number one, adhering the sides and bottom together.
- Watch my video [HERE](#) for a demonstration.
- Cut a piece of All My Love Designer Series Paper 1/2" x 9-1/4" and wrap it around the top edge of the treat holder, adhering with Multipurpose Glue.
- Cut two hearts, one from Petal Pink card stock and one from Whisper White card stock, using the medium scalloped heart from the Be Mine Stitched Framelits Dies. Each heart you cut will produce two pieces, both a scalloped frame and a plain heart. Adhere the Whisper White scalloped frame to the front of the treat holder with Multipurpose Glue as shown. Run the Petal Pink plain heart through the Big Shot with the Lace Dynamic Textured Impressions Embossing folder. Adhere onto the front of the treat holder with Stampin' Dimensionals.
- Tie a small bow from 1/8" Grosgrain Ribbon in Lovely Lipstick. Adhere to the front of the Petal Pink heart using a Mini Glue Dot.

CREATE THE SENTIMENT STICK

Valentine Treat Holder

Peggy Noe

858.722.1402

peggy@pretypapercards.com

<http://pretypapercards.com>

- Use a skewer stick from your kitchen :-) Cut to the size you like with wire clippers.
- From a 6" x 2-1/2" piece of Lovely Lipstick card stock, punch two starbursts using the Starburst Punch
- On a 2" x 2" piece of Whisper White card stock stamp "Happy Valentine's Day" in Lovely Lipstick Ink and using the stamp from the Meant to Be stamp set. Punch out with the 1-3/4" Circle Punch. Attach to one of the punched starbursts using Stampin' Dimensionals.
- You can attach the skewer stick to the back of this starburst in one of two ways: (1) use washi tape and leave as is; or, (2) use Mini Glue Dots, then attach the remaining punched starburst to the back with Multipurpose Glue.
- Using the heart cluster die from the Be Mine Framelits, cut a 2" x 4" piece of Petal Pink card stock. Use one of the tiny hearts from that die cut to attach to the sentiment circle with a Mini Stampin' Dimensional.
- Fill the treat holder with candies (you might want to crumple a paper towel and place it in first - then cover with candies). Insert the sentiment stick and give away to someone special!!

[SUBSCRIBE TO MY BLOG AND MY NEWSLETTER HERE!](#)

Peggy 

Valentine Treat Holder

Peggy Noe

858.722.1402

peggy@prettypapercards.com

<http://prettypapercards.com>

- [Meant To Be Cling Bundle - 150587](#)
Price: \$53.00
- [Lovely Lipstick 8-1/2" X 11" Cardstock - 146970](#)
Price: \$8.50
- [Petal Pink 8-1/2" X 11" Cardstock - 146985](#)
Price: \$8.50
- [Whisper White 8-1/2" X 11" Cardstock - 100730](#)
Price: \$9.75
- [All My Love 12" X 12" \(30.5 X 30.5 Cm\) Designer Series Paper - 148576](#)
Price: \$11.00
- [Lovely Lipstick Classic Stampin' Pad - 147140](#)
Price: \$7.50
- [Starburst Punch - 143717](#)
Price: \$18.00
- [1-3/4" \(4.4 Cm\) Circle Punch - 119850](#)
Price: \$18.00
- [Lace Dynamic Textured Impressions Embossing Folder - 148530](#)
Price: \$10.00
- [Big Shot - 143263](#)
Price: \$110.00
- [Simply Scored - 122334](#)
Price: \$30.00
- [Lovely Lipstick 1/8" \(3.2 Mm\) Grosgrain Ribbon - 146952](#)
Price: \$6.00
- [Multipurpose Liquid Glue - 110755](#)
Price: \$4.00
- [Stampin' Dimensionals - 104430](#)
Price: \$4.00
- [Mini Stampin' Dimensionals - 144108](#)
Price: \$4.00

Valentine Treat Holder

Peggy Noe

858.722.1402

peggy@pretypapercards.com

<http://pretypapercards.com>

- [Mini Glue Dots - 103683](#)

Price: \$5.25